

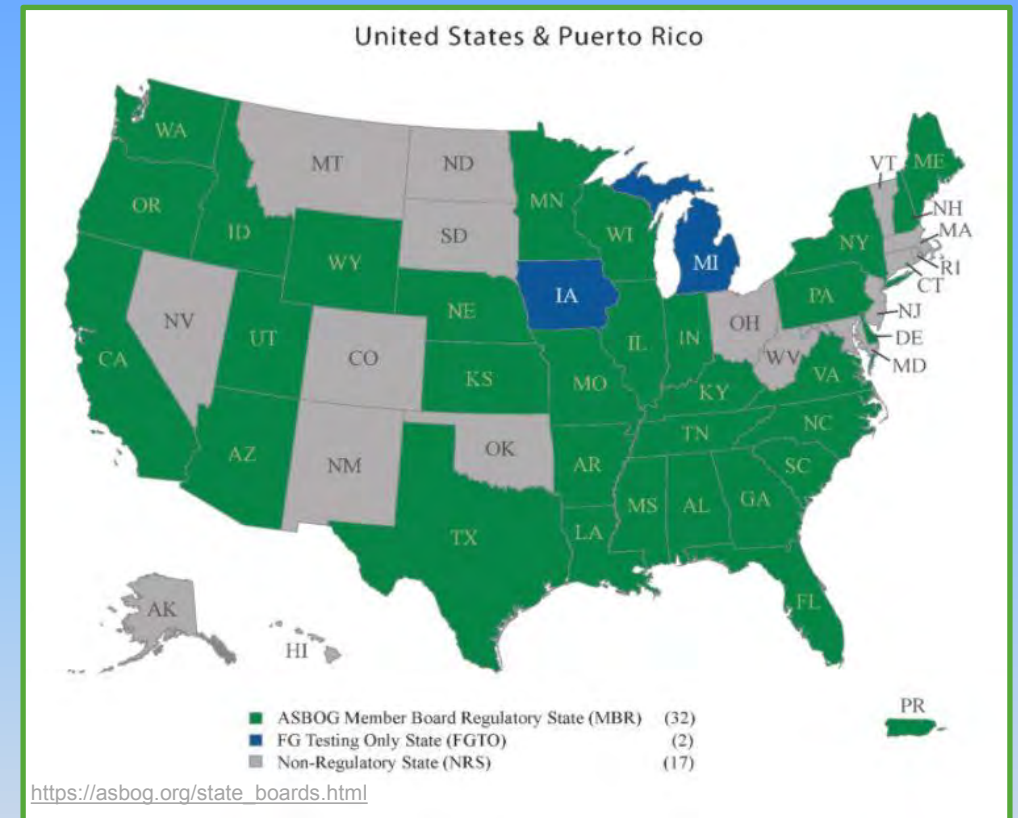
Obtaining your GIT/PG License

Starting the process.....



Why Do Geologists Need a Professional License?

- **Why register?**
 - Illegal to practice without a license in PA and 31 other states (oil & gas geologists generally exempt)
 - Geologic data often involves public health, safety, and welfare
 - PG's use sound geologic principals to avoid endangering the public or the environment.
- **License Benefits**
 - High professional & ethical standards
 - Protects jobs of well-qualified geologists
 - Most geologic reports submitted to regulatory agencies require a PG seal.



Geologist-in-Training (GIT)

- The First Step to a PG is a GIT
- Requirements are the same as a PG EXCEPT for Experience
 - Good Moral Character
 - College Degree in Geology, Geochemistry, Geophysics or Engineering Geology
 - Five years of geological work
 - Two examinations to demonstrate minimum competence
 - Fundamentals of geologic knowledge (FG)
 - Practice of geology (PG)
- GIT requires passing the FG
- Applicants responsible to submit documentation substantiating coursework
- After 5 years of appropriate & progressive work experience can qualify to sit for PG exam



<http://blogs.discovermagazine.com/rockyplanet/files/2019/08/multimediaFile-2272.jpg>

Get a Geologist in Training Certificate (GIT)

- A Geologist In Training Certificate (GIT), issued by the Commonwealth of Pennsylvania State Registration Board of Professional Engineers, Land Surveyors and Geologists, requires the same education and standards as a Licensed PG.
- Provide three references from Licensed Professional Geologists.
- The FG exam is based on a diverse knowledge of geologic terms and concepts learned during undergraduate education so it's beneficial to take the FG while still in school or soon after graduation.
- Take the FG exam if you have completed at least two or more years of an appropriate geology program if approved by the board but the GIT certificate won't be issued until you submit proof of graduation.
- A GIT only has to demonstrate five years of appropriate and progressive work experience plus the required professional references to qualify to sit for the PG exam.



PG/GIT Educational Requirements



- 4-year geology, geophysics, geochemistry, or engineering geology degree
- OR**
- A degree and 30 sem. credits of geology, 24 must be 300-level or above
- Must have **Structural Geology** and **Field Geology** on transcript

- GIT Only: Board may approve sitting for the FG exam for a Junior or Senior who already has Structural Geology and Field Geology on their transcript
- Transcripts are reviewed by the Licensing Board

- **Common Geology Courses**

*Field Geology**

Physical Geology
Mineralogy
Geophysics
Sedimentology
Soil/Rock Mechanics

*Structural Geology**

Historical Geology
Geochemistry
Stratigraphy
Hydrogeology
Environmental

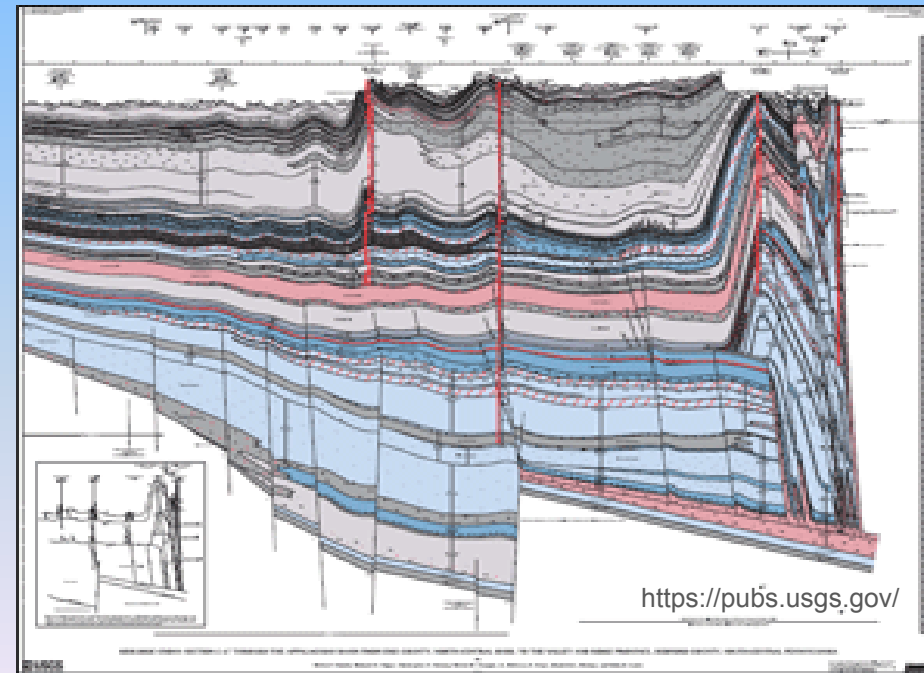
Tectonics
Petrology
Engineering Geology
Paleontology
Geologic Hazards

**Required*



From the Law...

(2) The formal education required under this subsection must include **field geology and structural coursework** that is sufficient to **demonstrate** that the candidate has **educational experience in tectonics and fractured bedrock geology** and the **field methods** needed to **measure, map and evaluate geologic data***



GIT Certification & PG License Application Workflow

1

Apply for License/Certification with PA Dept. of State thru PA License System (PALS)

<https://www.pals.pa.gov/#/page/default>



The Board reviews your application
\$50

2

Apply for Exam Pearson VUE

<https://home.pearsonvue.com>



Create online account and register for exam(s)
\$175 each

3

Take Exam

Association of State Boards of Geology

<http://www.asbog.org/>



ASBOG writes and grades the FG and PG Exams

Please check the Pearson Vue Website for all COVID restrictions for testing centers



Licensure is Managed Through the PA Dept. of State

Pennsylvania Council of Professional Geologists



- Professional Organization
- Represents Working Geologists
- Professional Advocacy, Education, Networking



Pennsylvania Department of State, Bureau of Licensing and Professional Affairs

State Registration Board of Engineers, Surveyors, and Geologists



- Manages Licenses
- Reviews License Applications
- Hears Disciplinary Actions/Appeals



PCPG was formed in 1989 to lobby the PA State Legislature to adopt licensure for Professional Geologists in December 1992. PCPG is not the PA licensing Board.



For Information Start with Pearson Vue Website

<https://home.pearsonvue.com>

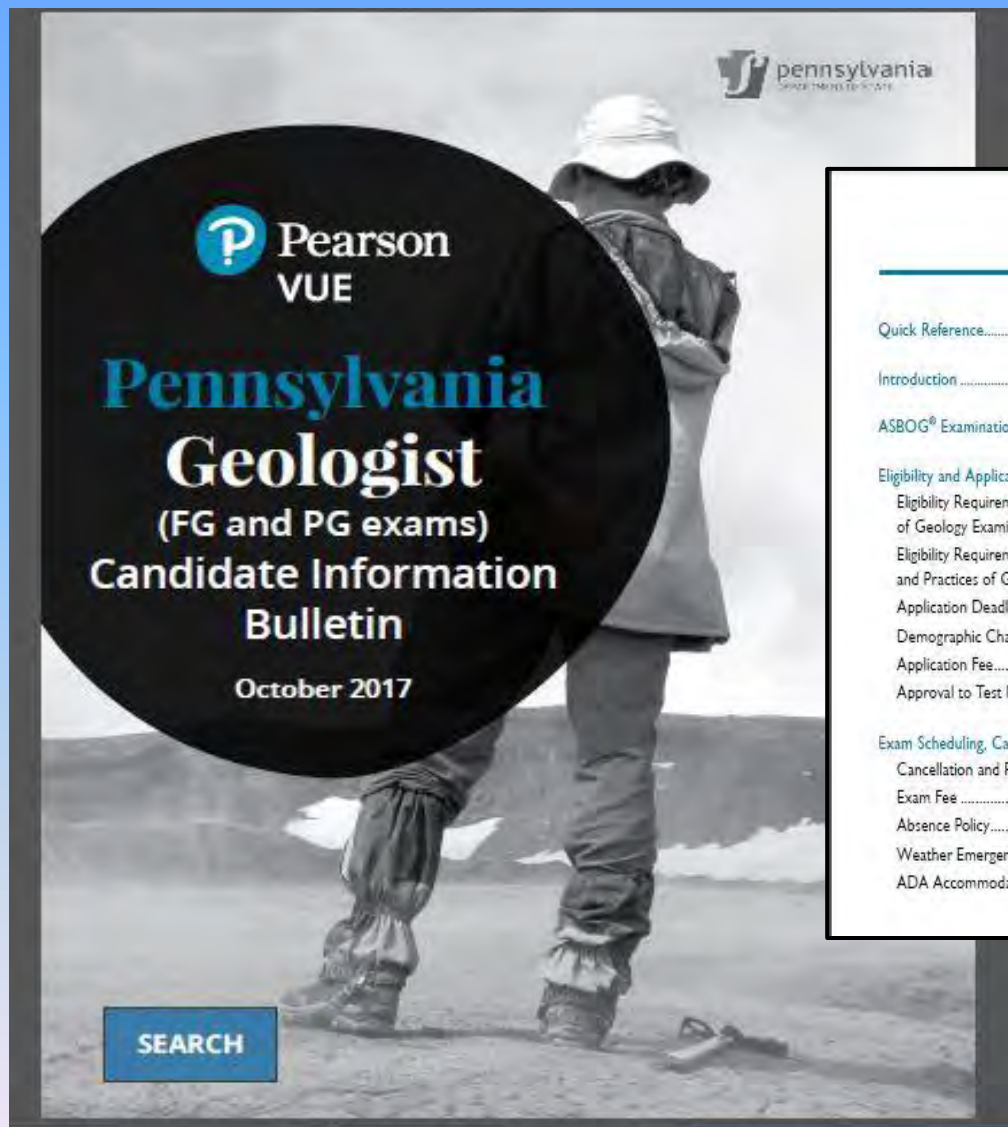
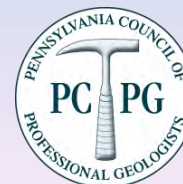
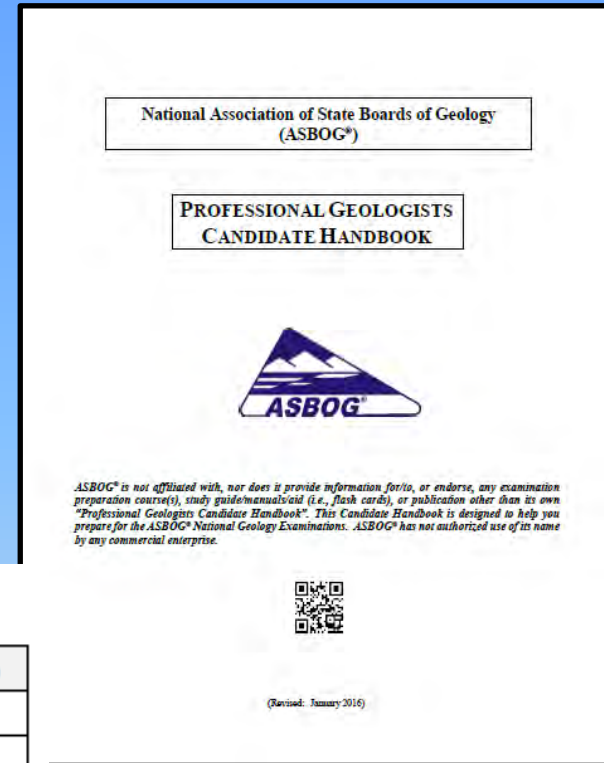


TABLE OF CONTENTS	
Quick Reference.....	inside front cover
Introduction	1
ASBOG® Examination Information	1
Eligibility and Application Process	1
Eligibility Requirements for the ASBOG® Fundamentals of Geology Examination	1
Eligibility Requirements for the ASBOG® Principles and Practices of Geology Examination	2
Application Deadlines	3
Demographic Changes	3
Application Fee	3
Approval to Test Notice	3
Exam Scheduling, Cancellation, and Rescheduling	3
Cancellation and Rescheduling Policy	3
Exam Fee	4
Absence Policy	4
Weather Emergencies	4
ADA Accommodations	4
Exam Day	5
What to Bring	5
Required Items	5
Acceptable Items in the Testing Room	5
Prohibited Items	5
Acceptable Forms of Candidate Identification	6
Name Matching Guidelines	6
Testing Policies	6
Lateness	6
Electronic Devices	6
Personal Belongings / Study Aids	6
Eating / Drinking / Smoking	6
Misconduct	6
Guests / Visitors	6



About the ASBOG Exam(s)

- Fundamentals of Geology: 140 Questions
- Practice of Geology: 110 Questions
- Must receive a score of 70 percent to pass
- Study for at least 12 months, consider taking review course
- Best to take the FG while the info is fresh from school
- Includes sample questions and answer key in all disciplines



FG and PG Test Blueprints

Content Domains	FG %	PG %
A. General and Field Geology	21	20
B. Mineralogy, Petrology, and Geochemistry	11	5
C. Sedimentology, Stratigraphy, and Paleontology	12	6
D. Geomorphology, Surficial Processes, and Quaternary Geology	13	8
E. Structure, Tectonics, and Seismology	11	8
F. Hydrogeology	12	19
G. Engineering Geology	11	19
H. Economic Geology and Energy Resources	9	15
TOTALS	100	100

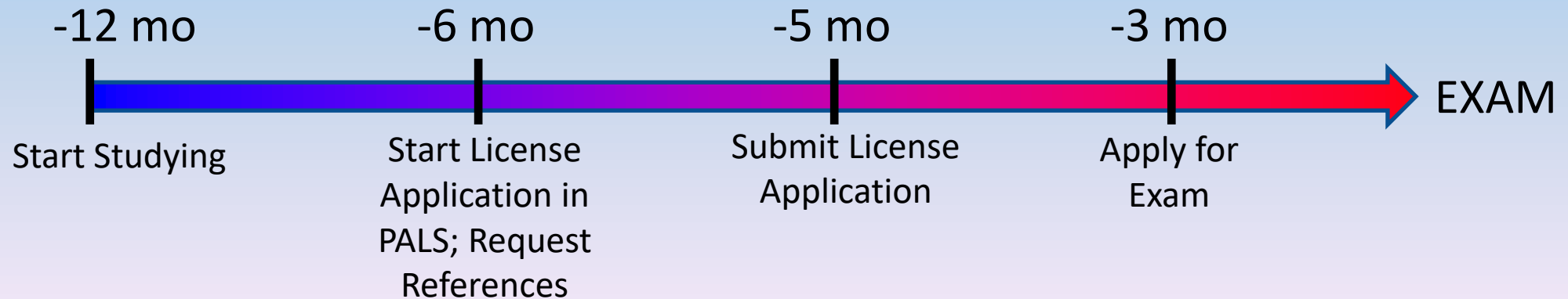
<https://asbog.org/index.html>



Deadlines and Recommended Timeline

ASBOG Exam Date	Last Day to Schedule thru Pearson VUE	PG License Application** Submitted to PA DOS
March 19, 2021	February 12, 2021	November 15, 2020
October 1, 2021	September 1, 2021	June 15, 2021
March 18, 2022	February 18, 2022	November 15, 2021
October 7, 2022	September 7, 2022	June 15, 2022
March 17, 2023	February 17, 2023*	November 15, 2022
October 6, 2023	September 6, 2023*	June 15, 2023

- Deadlines are firm dates (*approx. date as current Pearson VUE info only listed through 2022)
- **All supporting documentation and forms must be received by date
- Application must be approved prior to scheduling exam with Pearson Vue
- Suggested timeline:



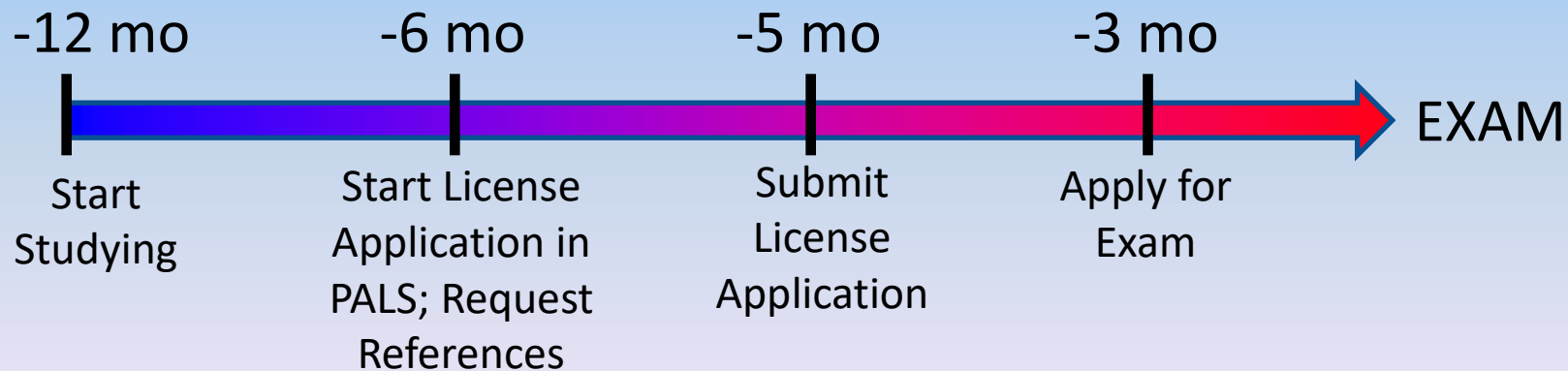
Be sure to check the websites for future dates, to make sure nothing has changed due to COVID-19.



Deadlines and Recommended Timeline

ASBOG Exam Date	Last Day to Schedule thru Pearson VUE	PG License Application* Submitted to PA DOS
March 20, 2020	January 20, 2020	November 15, 2019
October 2, 2020	August 2, 2020	June 15, 2020
March 19, 2021	January 19, 2021	November 15, 2020
October 1, 2021	August 1, 2021	June 15, 2021

- Deadlines are firm dates
- *All supporting documentation and forms must be received by date
- Application must be approved prior to scheduling exam with Pearson Vue
- Suggested timeline:

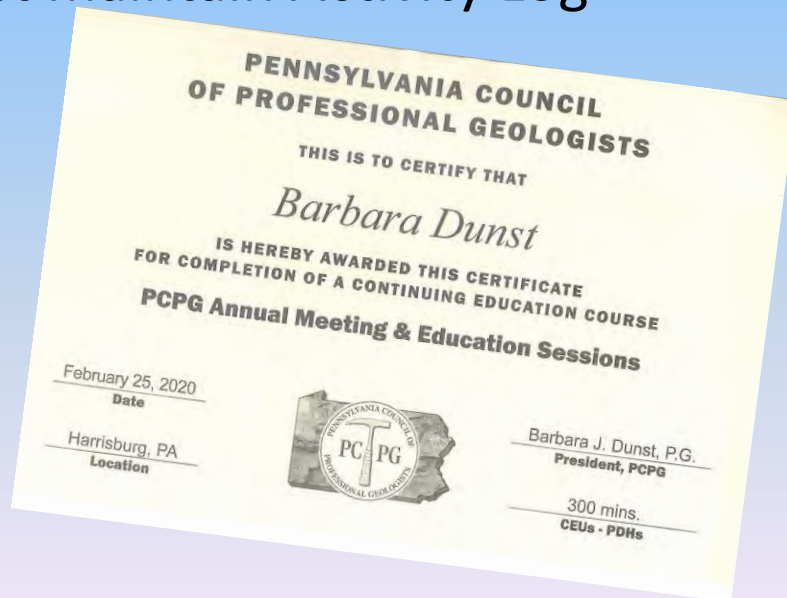


Be sure to check the websites for future dates, to make sure nothing has changed due to COVID-19.



Continuing Education

- Act 25, 2010
- 24 hours every 2 years
- Continuing education courses, professional society talks, conferences
- College courses, publications, patents
- Must maintain Activity Log



- PCPG is a Great Source for Continuing Ed!

